

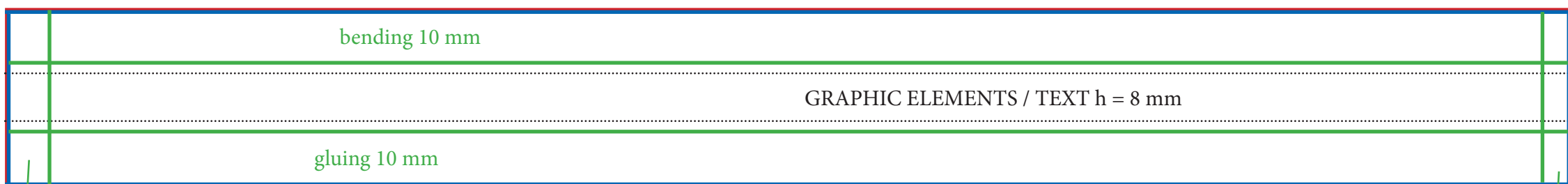


Cardboard lid $\Phi 91$ for ice cream bowl 270 ml / 9 oz

- An exact template provided bellow must be used for the bent layout preparation.
- Layouts are accepted in *.pdf format.
- Layouts must be in 1:1 scale.
- Images must have a resolution of no less than 250 dpi and in CMYK color model.
- All fonts must be converted into curvilinear objects.
- There should be no objects outside the bleed limit.
- Please make sure You do prepare your artwork after You read our requirements and instructions.

PUNCHING AREA
PRINTING AREA
VISIBLE AREA

■ Side board of the lid /length 296 mm, height 34 mm/



- One pantone color of customer's choice can be printed on the outside of the board. Gradients and raster images are not allowed. Additionally, a short text can be written in the visible area.

! The height of the board of the finished cover is 14 mm. Placed on the bowl, it covers 7 mm of its visible part from above

■ Top of the lid

